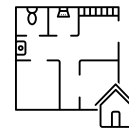




SIGNATURE
HOMES



2,975 sqft



4 bedroom+
1 office



4 bathroom



3 car garage



FEATURES:

- 11 FOOT CEILINGS & 10 FT THROUGH OUT HOUSE
- DROP CEILING W/ LEDS IN MASTER & LIVING ROOM
- SPA-LIKE MASTER BATHROOM
- MASTER & JR. SUTIES
- LARGE LAUNDRY ROOM



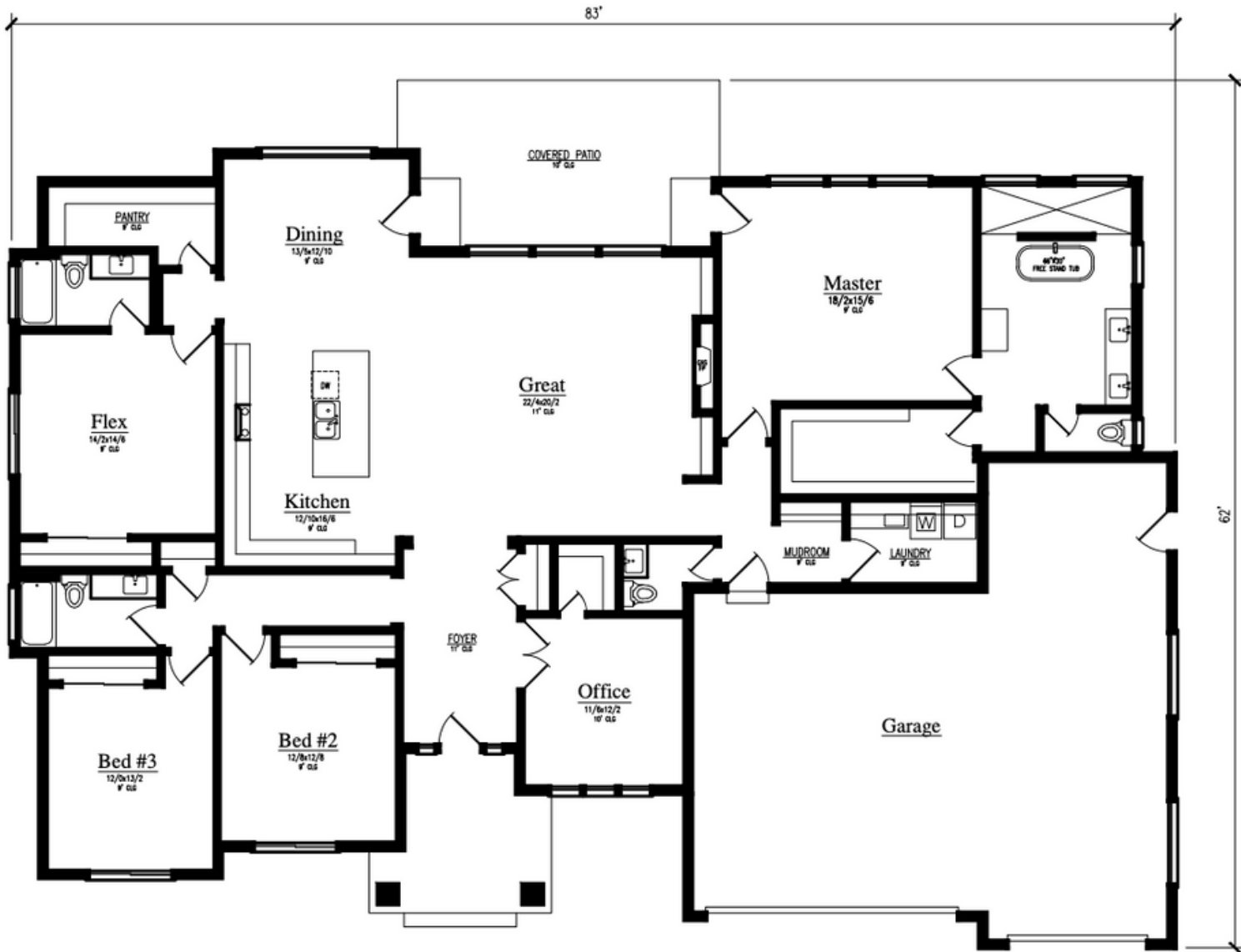
COLDWELL BANKER
TOMLINSON

VP ———
VP TEAM

509.221.0546



2,975 sqft



Main Floor Plan

SIGNATURE HOMES LLC RESERVES THE RIGHT TO MODIFY FLOOR PLANS, DESIGNS AND PRICES. DIMENSIONS AND SQUARE FOOTAGE ARE APPROXIMATE