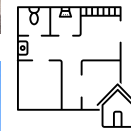




SIGNATURE HOMES



2,490 sqft



3 bedroom+
1 office



2 bathroom



3 car garage

FEATURES:

- SPA-LIKE MASTER BATHROOM
- DROP CEILING W/ LEDS IN MASTER & LIVING ROOM
- OPEN CONCEPT FLOOR PLAN
- LARGE LAUNDRY ROOM
- LARGE COVERED PATIO



COLDWELL BANKER
TOMLINSON

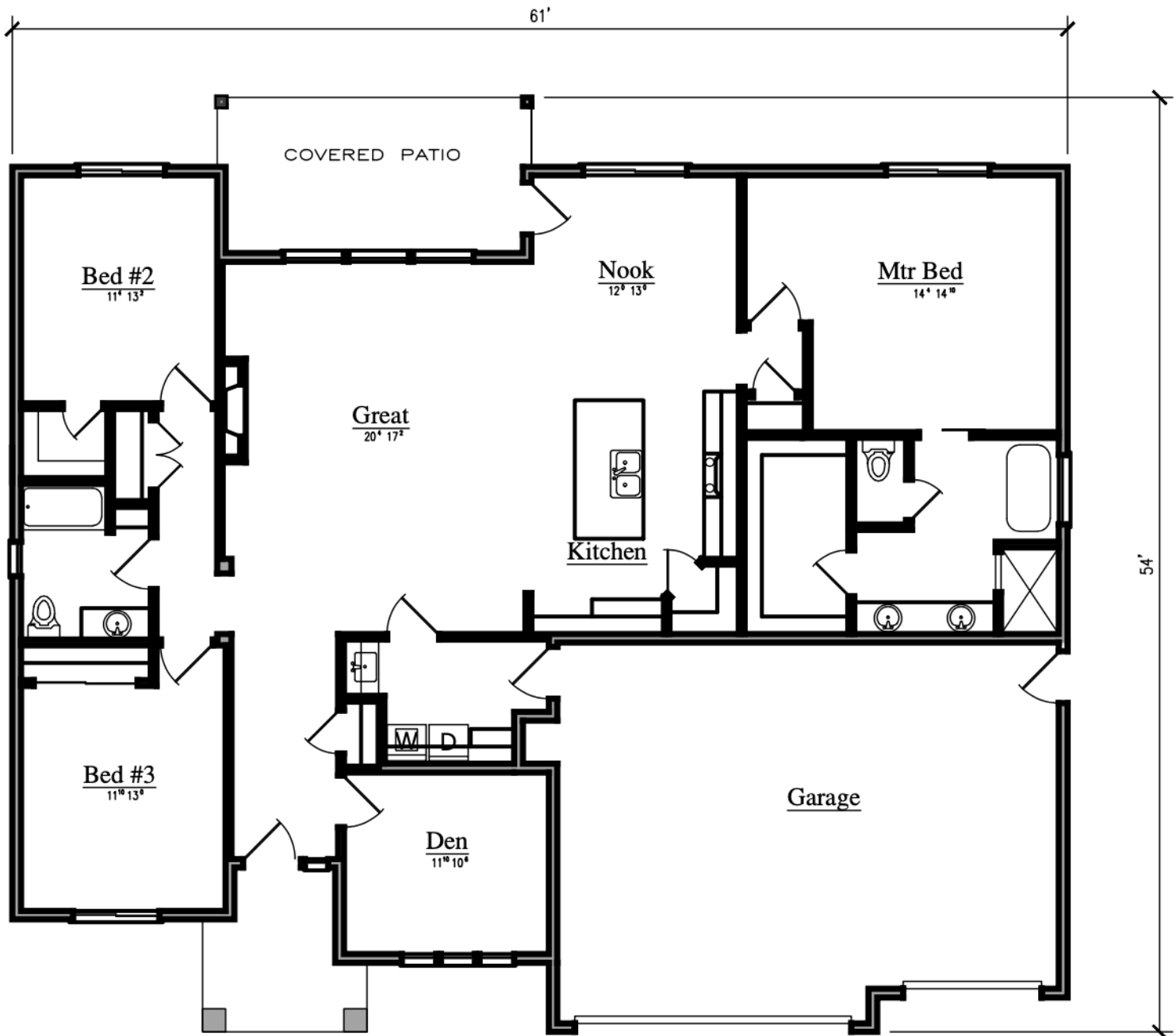
VP

VP TEAM

509.221.0546



2,109 sqft



Main Floor Plan

SIGNATURE HOMES LLC RESERVES THE RIGHT TO MODIFY FLOOR PLANS, DESIGNS AND PRICES. DIMENSIONS AND SQUARE FOOTAGE ARE APPROXIMATE