

2,638 sqft



3 bedroom+
1 office



3 bathroom



3 car garage



FEATURES:

- 11 foot ceilings
- master & secondary garage
- open concept living room
- Drop Ceiling w/ LEDs in master & living room
- spa-like master bathroom
- large laundry room
- mudroom with built-ins



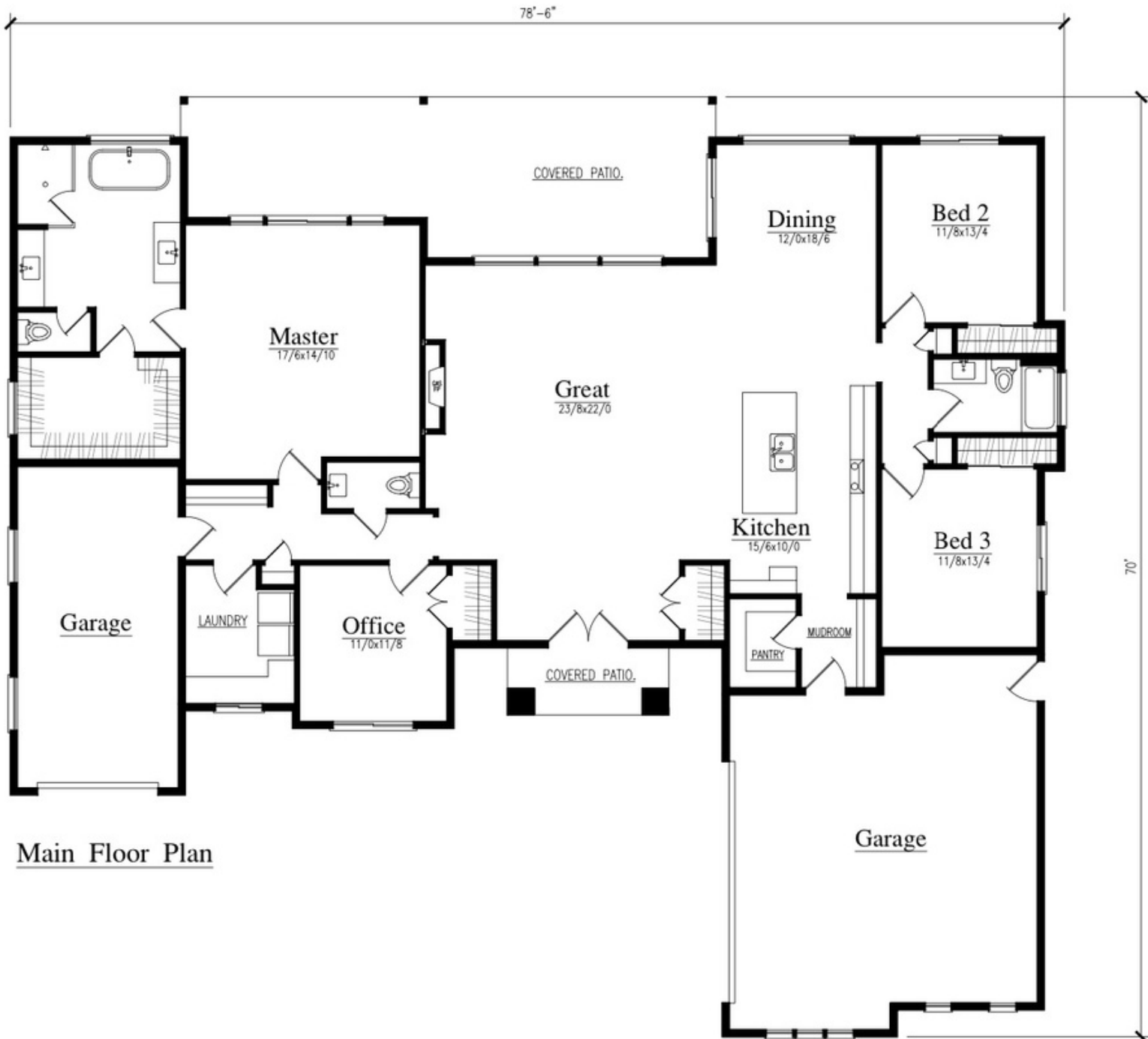
COLDWELL BANKER
TOMLINSON

VP ———
VP TEAM

509.221.0546



2,638 sqft



Main Floor Plan

SIGNATURE HOMES LLC RESERVES THE RIGHT TO MODIFY FLOOR PLANS, DESIGNS AND PRICES. DIMENSIONS AND SQUARE FOOTAGE ARE APPROXIMATE. IMAGES AND RENDERINGS MAY NOT BE OF THE ACTUAL HOUSE.